



Applying PBS Across Settings:
Key Ingredients to Success

Meme Hieneman, Ph.D., BCBA
Home and Community PBS Network
Positive Behavior Support Applications
Purdue University Global



1

Thinking About Context...



- **What:** What does PBS entail (regardless of context)?
- **Who:** For whom is PBS helpful?
- **When:** When is PBS beneficial?
- **Where:** Where should PBS be implemented?

2

Agenda

- Evolution of Positive Behavior Support
- Applications Across Contexts and Populations
- Basic Principles and Process/MTSS Framework
- Defining Characteristics: "Benchmarks"
 - Support Team Involvement
 - Assessment of Contexts and Functions
 - Behavior Support Plan Design
 - Data-Based Decision Making
 - Focus on Lifestyle Change
- Implications for Integration & Collaboration

3

APBS Definition of PBS

Positive Behavior Support (PBS) is a set of research-based strategies used to increase quality of life and decrease problem behavior by teaching new skills and making changes in a person's environment.

Positive behavior support combines:
Valued outcomes;
Behavioral and biomedical science;
Validated procedures; and
Systems change to enhance quality of life and reduce problem behaviors.

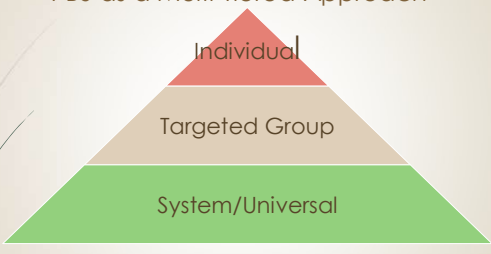
4

Characteristics of PBS
(Kincaid, Dunlap, Kern, et al. 2016)

- Research-based assessment, intervention, and data-based decision making
- Building social and other functional competencies, creating supportive contexts, and preventing the occurrence of problem behaviors
- Respectful of a person's dignity and overall well-being
- Based on behavioral, educational, and social sciences, although other evidence-based procedures may be incorporated.

5

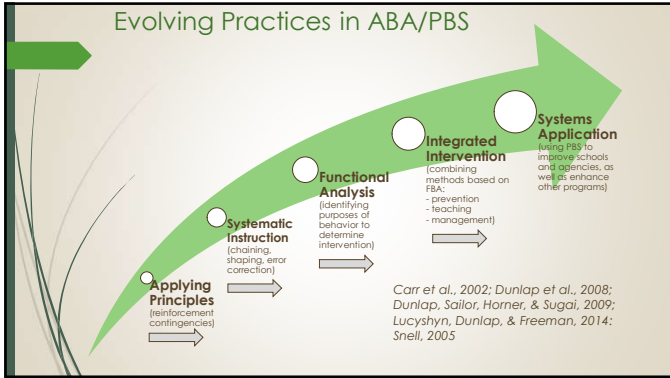
PBS as a Multi-Tiered Approach



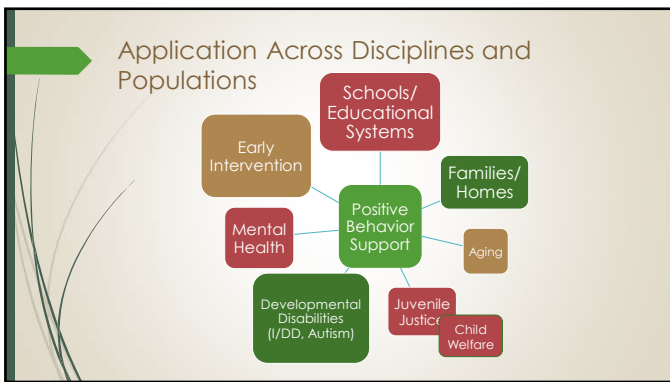
Individual
Targeted Group
System/Universal

Duchnowski & Kutash, 2009; Fox & Hemmeter, 2009; McCart et al., 2009; Sugai & Horner, 2009

6



7



8

- ### Necessary Components of PBS
- Collaborative Process
 - Assessment of Contexts & Functions
 - Multicomponent Behavior Plans
 - Data Based Decision Making
 - Focus on Lifestyle Change
- Assessment of PBS Practices Questionnaire
www.flapbs.net: Resources, Practice, Community

9


Features Identified in Selected Seminal Works

	Sources	Collaborative Process	Assessment of Contexts & Functions	Multi-component Plans	Data-Based Decision Making	Focus on Lifestyle Change
Articles/Guides	Horner, Dunlap, Koegel et al. (1990)		X	X	X	X
	Dunlap, Hieneman, Knoster et al. (2000)	X	X	X	X	X
	Carr, Dunlap, Horner et al. (2002)	X	X	X	X	X
	Anderson, Brown, Scheuermann et al. (2007)	X	X	X	X	X
Edited Books	Koegel, Koegel, & Dunlap (2006)	X	X	X	X	X
	Sailor Dunlap, Sugai, & Horner (2009)	X	X	X	X	X
	Brown, Anderson, & De Pry (2015)	X	X	X	X	X

10

Collaborative Process

- Stakeholders from all relevant settings
- Person-centered/group action planning
- Team involved in all aspects of process
- Information and training provided
- Communicate consistently

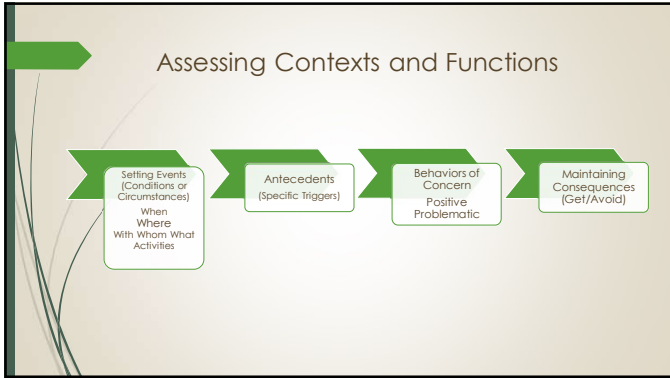


11

Assessment of Contexts and Functions

- Assessments include:
 - Interviews/indirect assessments
 - Direct observations across contexts
 - Ecological/curricular assessments
- Assessments result in patterns:
 - Probable functions of behavior
 - Circumstances that trigger behavior

12



13

- ### Behavior Support Plan Design
- Interventions linked to patterns
 - Behavior support plans include:
 - Goals and specific behaviors of concern
 - Environmental arrangements to support behavior
 - Instructional targets and teaching strategies
 - Management of consequences (R+)
 - Maximize autonomy and respect

14

Behavior Support Plan Elements

Proactive Strategies	Teaching Strategies	Management Strategies
Changing environment to prompt positive behavior and make problem behavior unnecessary (prior to the behavior)	Teaching skills to replace problem behavior or allow individuals to be more successful	Responding to behavior to reinforce positive and not negative behavior
Modifying setting events to improve lifestyle and climate		
Supporting caregivers and practitioners to implement interventions consistently		

15

Data Based Decision Making

- Behaviors of concern defined objectively
- Objective data collected to monitor progress and evaluate outcomes
- Implementation monitored to ensure fidelity
- Data synthesized and analyzed to guide decision-making

16

Focus on Lifestyle/System Change

- Achievement of meaningful goals (e.g., participation, relationships)
- Intervention strategies are designed to
 - be implemented by caregivers
 - fit within natural routines
- Advocacy for resources/systems change as needed

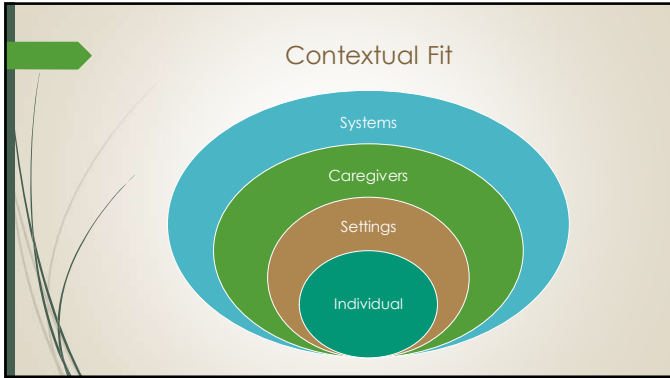
SOCIAL VALIDITY & SUSTAINABILITY

17

Domains of Quality of Life

PBS Quality of Life Questionnaire

18



19


- ### Implementing PBS at a Systems Level
- Leadership and Planning Processes
 - Hiring Practices and Job Descriptions
 - Supportive Policies and Procedures
 - Resources and Universal Supports
 - Templates, Tools, and Resources
 - Training and On-Site Coaching
 - Evaluations and Incentive Systems
 - Data Collection Tools/Systems

20


- ### Implications for Practice
- Clarity and consistency in defining PBS
 - Engaging and empowering stakeholders
 - Blending with other disciplines – and integrating in existing processes - without losing integrity
 - Creating sustainable training and implementation tools and ensuring fidelity
 - Ensuring shared goals and coordinated activity
 - Attending to contextual fit and diversity in all aspects of our work (e.g., goals, measures, interventions)
- Jargon-Free Zone**

21

In Closing...



- Questions? Answers?
- Meme Hieneman, Ph.D. BCBA
meme@pbsapp.com
- Home and Community PBS
 - <https://hcpbs.org/>
 - Facebook & Twitter



22

References

PBS: History and Defining Features

- Anderson, J., Brown, F., Scheuerman, B., Baker, C., Depry, R., Dukes, C.,... & Schall, C. (2007). *Positive behavior support standards of practice: Individual level*. Association for Positive Behavior support. Retrieved March 31, 2014, from <http://www.apbs.com>.
- Brown, F., Anderson, J. L. & De Pry, R. L. (Eds.) (2015). *Individual Positive Behavior Supports: A Standards-Based Guide to Practices in School and Community Settings*. Paul H. Brookes.
- Carr, E. G., Dunlap, G., Horner, R. H., Koegel, R. H., Turnbull, A. P., Sailor, W.,... Fox, L. (2002). Positive behavior support: Evolution of an applied science. *Journal of Positive Behavior Interventions*, 4, 4-16.
- Dunlap, G., Sailor, W., Horner, R. H., & Sugai, G. (2009). Overview and history of positive behavior support. In W. Sailor, G. Dunlap, G. Sugai, & R. Horner (Eds.), *Handbook of positive behavior support* (pp. 3-16). New York, NY: Springer Science + Business Media.
- Dunlap, G., Carr, E. G., Horner, R. H., Zarcone, J. R., & Schwartz, L. (2008). Positive behavior support and applied behavior analysis: A familial alliance. *Behavior Modification*, 32, 682-698.
- Hieneman, M. (2015). Positive behavior support for individuals with behavioral challenges. *Behavior Analysis in Practice*, DOI 10.1007/s40617-015-0051-6
- Hieneman, M. & Fefer, S. (2017). Employing the principles of positive behavior support to enhance family education and intervention. *Journal of Child and Family Studies*, DOI 10.1007/s10826-017-0813-6

23

References

PBS: History and Defining Features (cont.)

- Horner, R. H., Dunlap, G., Koegel, R. L., Carr, E. G., Sailor, W., Anderson, J.,...O'Neill, R. E. (1990). Toward a technology of "nonaversive" behavioral support. *Journal of the Association for Persons with Severe Handicaps*, 15, 125-132.
- Kincaid, D., Dunlap, D., Kern, L., Lane, K. L., Bambara, L. M., Brown, F., Fox, L. & Knoster, T. (2016). Positive behavior support: A proposal for updating and refining the definition. *Journal of Positive Behavior Interventions*, 18-73.
- Koegel, L. K., Koegel, R. L., & Dunlap, G. (1996). *Positive behavioral support: Including people with difficult behavior in the community*. Baltimore, MD: Paul H. Brookes.
- Lucyshyn, J. M., Dunlap, G., & Freeman, R. (2014). A historical perspective on the evolution of positive behavior support as a science-based discipline. In F. Brown, J. Anderson, & R. De Pry (Eds.), *Individual Positive Behavior Supports: A Standards-Based Guide to Practices in School and Community-Based Settings* (pp. 3-25). Baltimore: Paul H. Brookes.
- Sailor, W., Dunlap, G., Sugai, G., & Horner, R. (Eds.) (2009). *Handbook of positive behavior support*. New York, NY: Springer Science + Business Media.
- Snell, M. (2005). Fifteen years later: Has positive programming become the expected technology for addressing problem behavior? A commentary on Horner et al. (1990). *Research & Practice for Persons with Severe Disabilities*, 30, 11-14.

24

References

PBS: Multi-Tiered Systems

- Brown-Chidsey, R. & Bickford, R. (2015). *Practical Handbook of Multi-Tiered Systems of Support: Building Academic and Behavioral Success in Schools*. Guilford Press.
- Duchnowski, A. J. & Kutash, K. (2009). Integrating PBS, mental health services, and family-driven care. In W. Sailor, G. Dunlap, G. Sugai, & R. Horner (Eds.), *Handbook of positive behavior support* (pp. 203-232). New York, NY: Springer Science + Business Media.
- Fox, L. & Hemmeter, M. L. (2009). A programwide model for supporting social emotional development and addressing challenging behavior in early childhood settings. In W. Sailor, G. Dunlap, G. Sugai, & R. Horner (Eds.), *Handbook of positive behavior support* (pp. 177-202). New York, NY: Springer Science + Business Media.
- McCart, A., Wolf, N., Sweeney, H. M., Markey, U., & Markey, D. J. (2009). Families facing extraordinary challenges in urban communities: Systems-level application of positive behavior support. In W. Sailor, G. Dunlap, G. Sugai, & R. Horner (Eds.), *Handbook of positive behavior support* (pp. 257-278). New York, NY: Springer Science + Business Media.
- Sugai, G. & Horner, R. H. (2009). Defining and describing schoolwide positive behavior support. In W. Sailor, G. Dunlap, G. Sugai, & R. Horner (Eds.), *Handbook of positive behavior support* (pp. 307-326). New York, NY: Springer Science + Business Media.

25

References

PBS: Intervention Components

- Bambara, L. M. & Kunsch, C. (2014). Effective teaming for positive behavior support. In F. Brown, J. Anderson, & R. De Pry (Eds.), *Individual Positive Behavior Supports: A Standards-Based Guide to Practices in School and Community-Based Settings* (pp. 47-70). Baltimore: Paul H. Brookes. (support team)
- Benazzi, L., Horner, R. H., & Good, R. H. (2006). Effects of behavior support team composition on the technical adequacy and contextual fit of behavior support plans. *Journal of Special Education, 40*, 160-170. (support team)
- Cook, C. R., Mayer, G. R., Browning Wright, D., Kramer, B., Wallace, M. D., Dart, E., Collins, T., & Restori, A. (2012). Exploring the link among behavior intervention plans, treatment integrity, and student outcomes under natural educational conditions. *Journal of Special Education, 46*, 3-16. (data-based decision-making)
- Freeman, R., Enyart, M., Schmitz, K., Kimbrough, P., Matthews, P., & Newcomer, L. (2014). Integrating best practice in person-centered planning, wraparound, and positive behavior support to enhance quality of life. In F. Brown, J. Anderson, & R. De Pry (Eds.), *Individual Positive Behavior Supports: A Standards-Based Guide to Practices in School and Community-Based Settings* (pp 241-257). Baltimore: Paul H. Brookes. (lifestyle change)
- Hanley, G. P., Iwata, B. A., & McCard, B. E. (2003). Functional analysis of problem behavior: A review. *Journal of Applied Behavior Analysis, 36*, 147-185. (assessment)

26

References

PBS: Intervention Components (cont.)

- Hieneman, M. (2015). Positive behavior support for individuals with behavior challenges. *Behavior Analysis in Practice, 8*, 101-108. (behavior support plan)
- Hieneman, M. & Dunlap, G. (2014). Implementing multi-element positive behavior support plans. In F. Brown, J. Anderson, & R. De Pry (Eds.), *Individual Positive Behavior Supports: A Standards-Based Guide to Practices in School and Community-Based Settings* (pp.417-431). Baltimore: Paul H. Brookes. (data-based decision making)
- O'Neill, R. E., Albin, R. W., Storey, K., Horner, R. H., & Sprague, J. R. (2014). *Functional assessment and program development for problem behavior: A practical handbook (3rd Edition)*. Cengage Learning. (assessment, behavior support plan)
- Schalock, R. L., Gardner, G. F., & Bradley, V. J. (2007). *Quality of life for people with intellectual and other developmental disabilities: applications across individuals, organizations, communities, and systems*. Washington, DC: American Association on Intellectual and Developmental Disabilities. (lifestyle change)
- Wockler, D. P., Berg, W. K., Harding, J. W., & Cooper-Brown, L. J. (2011). Functional and structural approaches to behavioral assessment of problem behavior. In W. W. Fisher, C. C. Piazza & H. S. Roane (Eds.), *Handbook of Applied Behavior Analysis*. (pp. 165-181). New York, NY, US: Guilford Press. (assessment)

27

References

PBS: Population-Specific Applications

- Blair, K. S. C., Fox, L., & Lentini, R. (2010). Use of positive behavior support to address the challenging behavior of young children within a community early childhood program. *Topics in Early Childhood Special Education, 30*, 68-79. [early intervention]
- Carr, E. G., Horner, R. H., Turnbull, A. P., & Braddock, D. (Eds.) (1999). *Positive behavior support for people with developmental disabilities: A research synthesis*. American Association on Mental Retardation. [DD/ASD]
- Durand, V.M., Hiemen, M., Clarke S., Wang, M., & Rinaldi, M. (2013). Positive family intervention for severe challenging behavior I: A multi-site randomized clinical trial. *Journal of Positive Behavior Interventions, 15*, 133-143. [families]
- Fettig, A. & Barton, E.E. (2014). Parent implementation of function-based intervention to reduce children's challenging behavior: A literature review. *Topics in Early Childhood Special Education, 34*, 49-61. [families]
- Goh, A. E. & Bambara, L. M. (2010). Individualized positive behavior support in school settings: A meta-analysis. *Remedial and Special Education, 33*, 271-286. [schools]
- Horner, R. H. & Carr, E. G. (1997). Behavioral support for students with severe disabilities: Functional assessment and comprehensive intervention. *Journal of Special Education, 31*, 84-104. [DD/ASD]
- Horner, R., Sugai, G., Smolkowski, K., Eber, L., Nakasato, J., Todd, A., & Esperanza, J. (2009). A randomized, wait-list controlled effectiveness trial assessing school-wide positive behavior support in elementary schools. *Journal of Positive Behavior Interventions, 11*, 133-145. [schools]
- Lambros, K. M., Culver, S. K., Angulo, A., & Hosmer, P. (2007). Mental health intervention teams: A collaborative model to promote positive behavior support for youth with emotional or behavioral disorders. *The California School Psychologist, 12*, 59-71. [mental health]

28

References

PBS: Population-Specific Applications (cont)

- Lucyshyn, J. M., Binnendyk, L., Fossett, B., Cherezhynski, C., Lohrmann, S., Elkinson, L., & Miller, L. (2009). Toward an ecological unit of analysis in behavioral assessment and intervention with families of children with developmental disabilities. In W. Sailor, G. Dunlap, G. Sugai, & R. Horner (Eds), *Handbook of Positive Behavior Support* (pp. 73-104). Baltimore: Paul H. Brookes. [families]
- Neitzel, J. (2010). Positive behavior support for children and youth with autism spectrum disorders. *Preventing School Failure: Alternative Education for Children and Youth, 54*, 247-255. [DD/ASD]
- Nelson, C. M., Sprague, J. R., Jolivette, K., Smith, C. R., & Tabin, T. J. (2009). Positive behavior support in alternative education, community-based mental health, and juvenile justice settings. In W. Sailor, G. Dunlap, G. Sugai, & R. Horner (Eds), *Handbook of Positive Behavior Support* (pp. 463-494). Baltimore: Paul H. Brookes. [juvenile justice]
- Sugai, G., Horner, R. H., Dunlap, G., Hiemen, M., Lewis, T. J., Nelson, C. M., Wickham, D. (2000). Applying positive behavior support and functional behavioral assessment in schools. *Journal of Positive Behavior Interventions, 2*, 131-143. [schools]
- Solomon, B. G., Klein, S. A., Hintze, J. M., Cressey, J. M., & Peller, S. L. (2012). A meta-analysis of school-wide positive behavior support: An exploratory study using single-case synthesis. *Psychology in the Schools, 29*, 105-121. [schools]
- Wood, B. K., Ferro, J. B., Umbreit, J., & Llaupsin, C. J. (2011). Addressing the challenging behavior of young children through systematic function-based intervention. *Topics in Early Childhood Special Education, 30*, 221-232. [early intervention]

29
